

# PRIAPISM SUPPLIES



Emesis basin to collect blood



Extension tubing



250 cc NS for irrigation



Coban



Syringes for aspiration



Phenylephrine  
100 mcg/ml



18g Needles  
Cavernosal Access



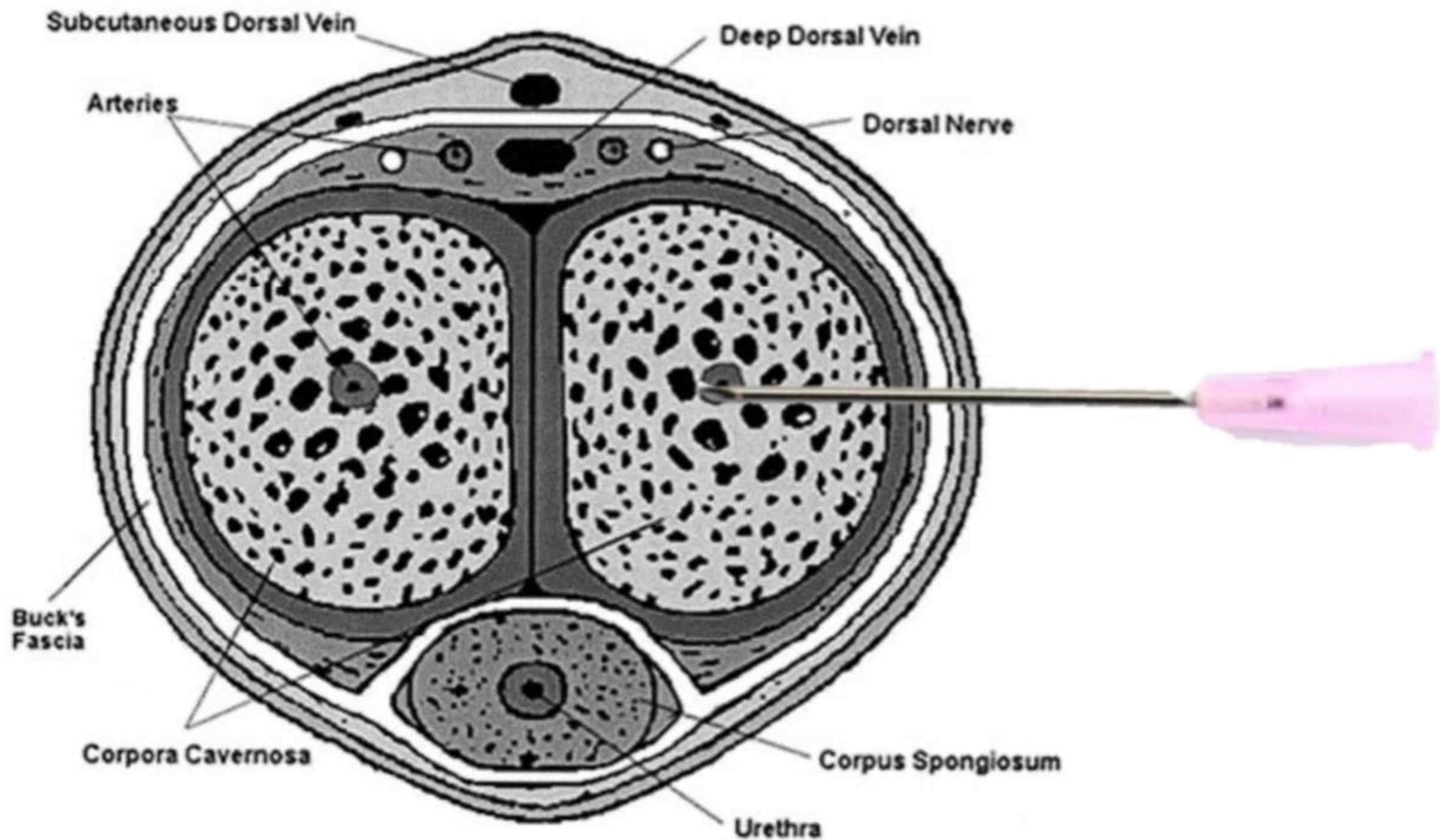
27g Needles  
Penile Block



Cardiac monitor



# PRIAPISM PROCEDURE



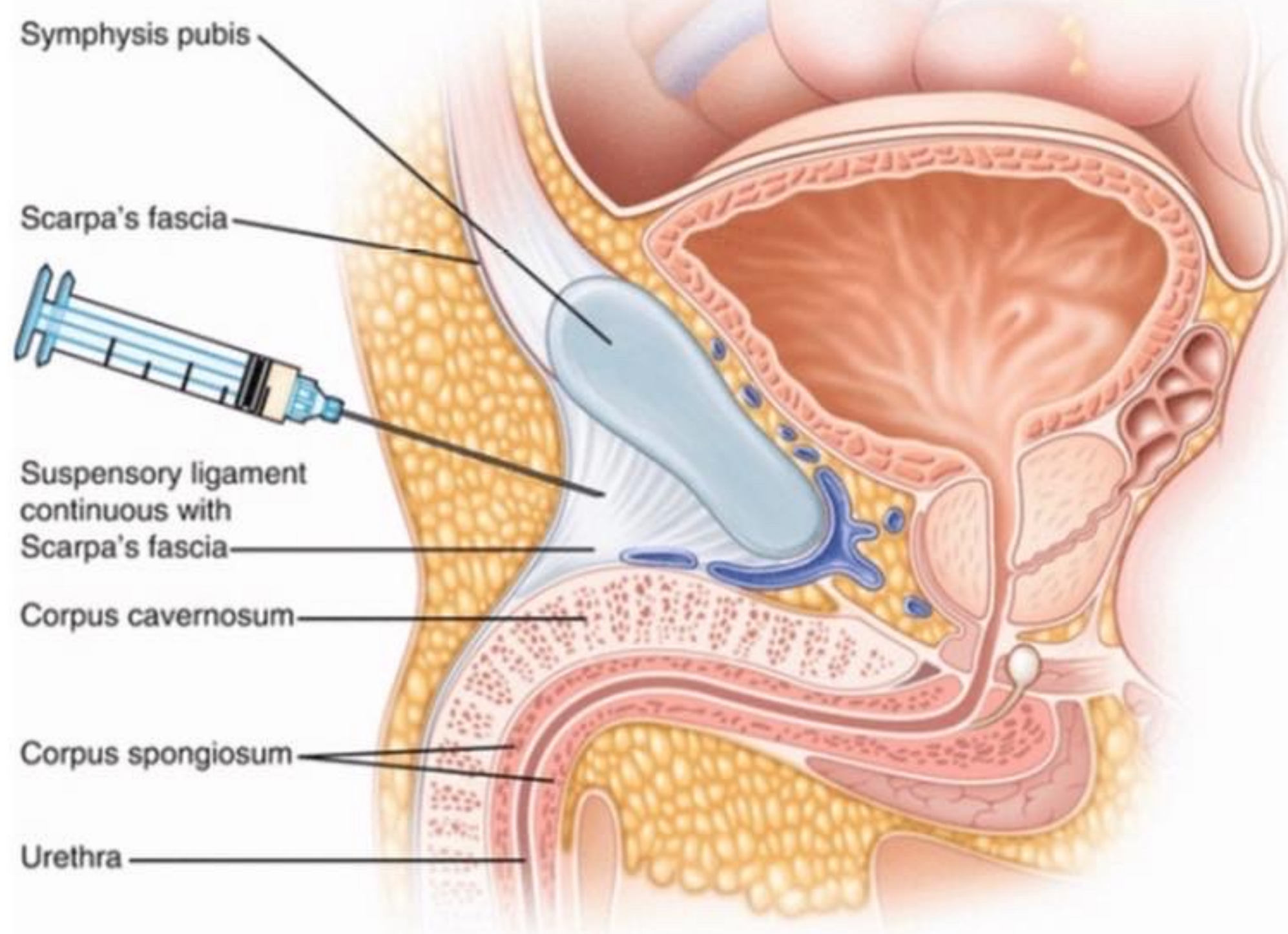
## STEPS

1. Place on cardiac monitor
2. Penile Block
3. Insert 18g Needle at 3 or 9 o'clock position to enter the corpus cavernosa
4. Attach extension tubing to needle
5. Manual decompression (avoid needle stick)
6. Inject phenylephrine 100mcg/ml – 1ml
7. Aspirate
8. Irrigate with NS if line clots
9. Repeat phenylephrine q 3-5 min
10. Apply coban to help with hematoma formation



# PRIAPISM

## PENILE RING BLOCK



## Dorsal Penile Block

**27g Needle**

**Introduce medially just above penis & below pubic symphysis**

**“Pop” through Scarpa’s fascia**

**Access subpubic space**

**Aspirate to avoid intravascular injection**

**Inject up to 10 cc and fan laterally**

## Ventral Penile Block

**27g Needle**

**Ventral surface of penis**

**Inject just above the scrotum at base of penis**

**5 cc of local anesthetic**

