

ERECTOR SPINAE PLANE BLOCK



MATERIALS

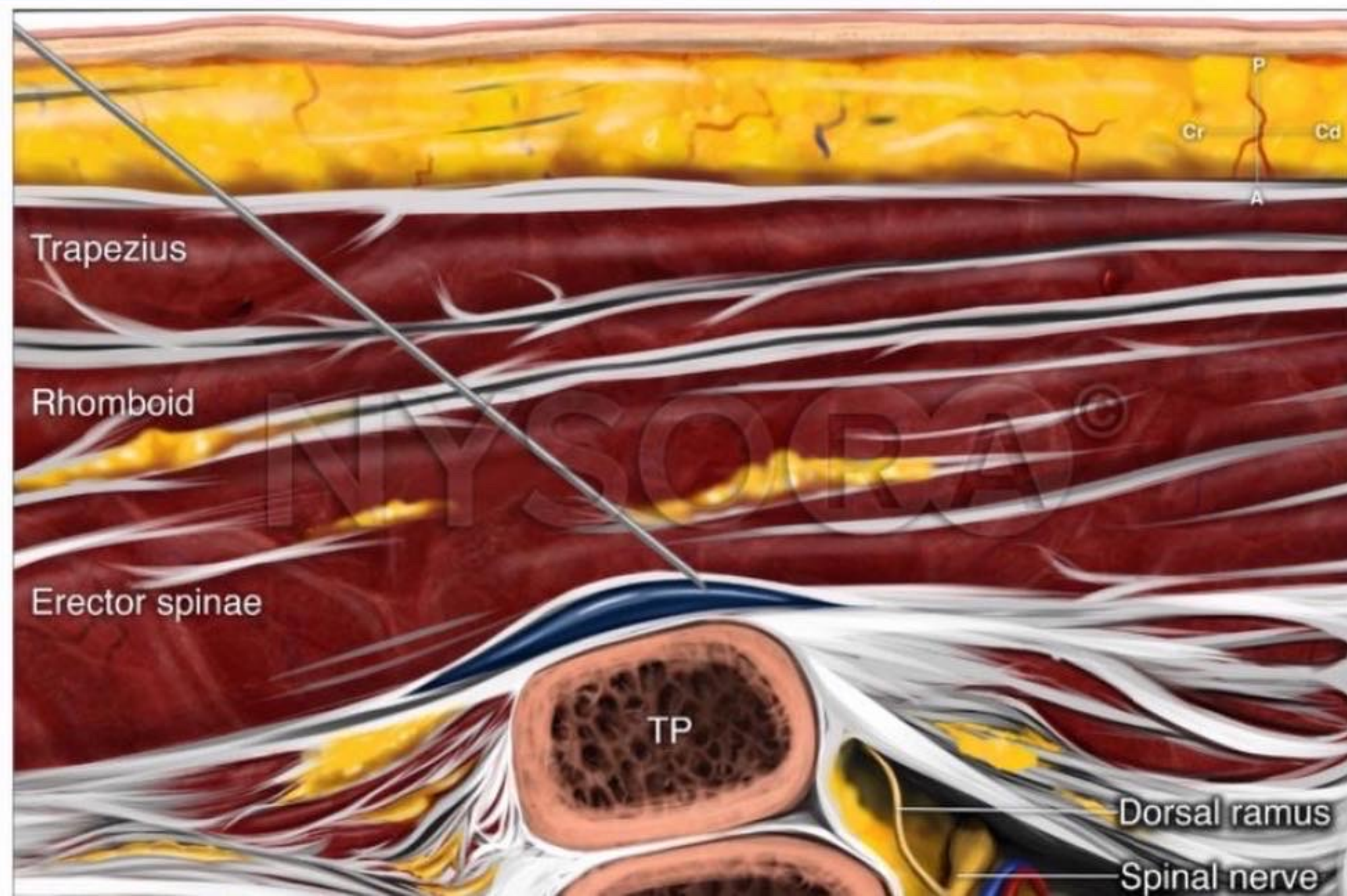
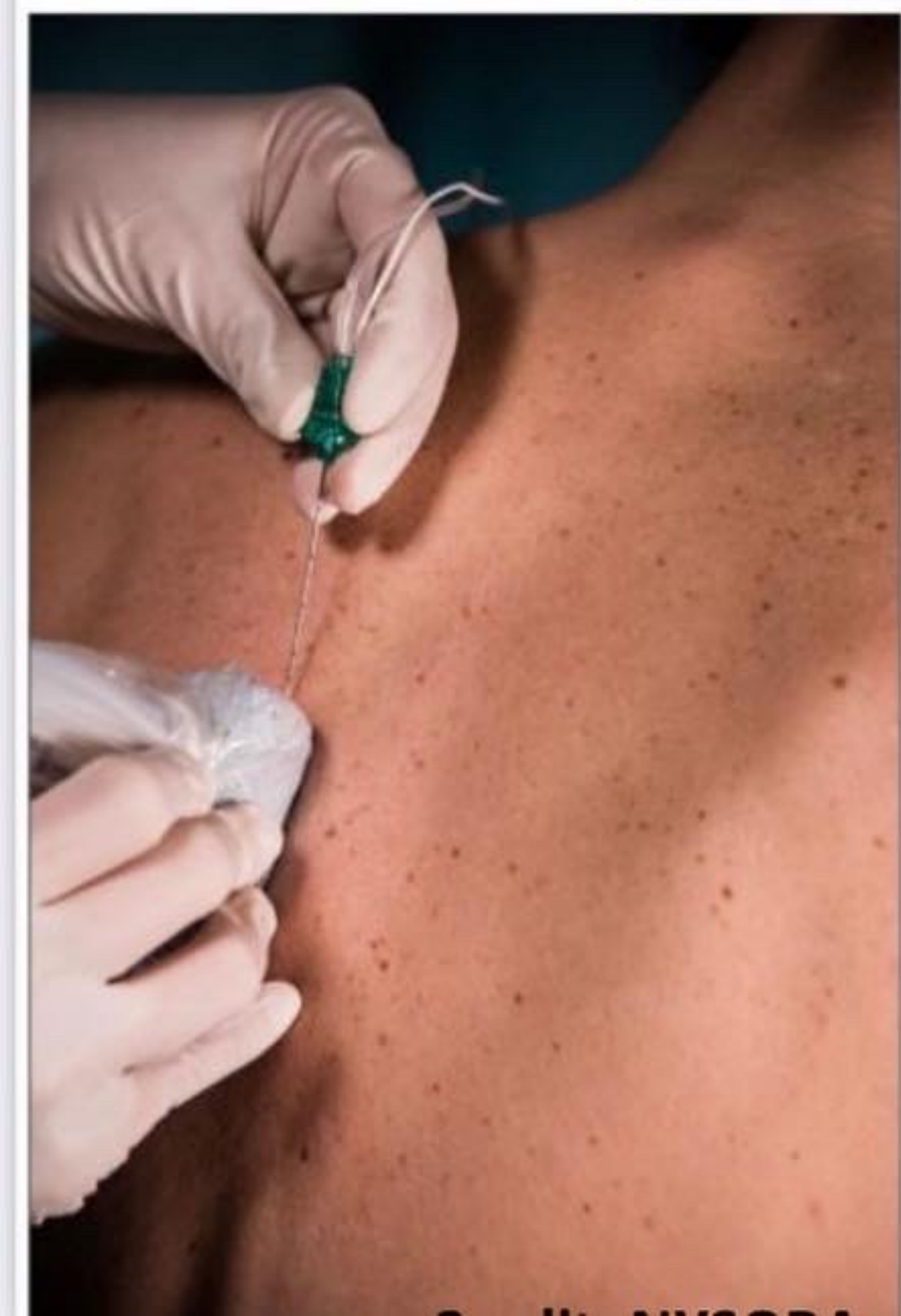
Regional Nerve Block Needle
Linear Probe
Probe Cover
30cc syringe
0.5% Ropivacaine

INJECTION LEVELS

T5 – Chest/Ribs
T10 – Abdomen
L3 – Low Back
Infuses 3 levels above and below injection site

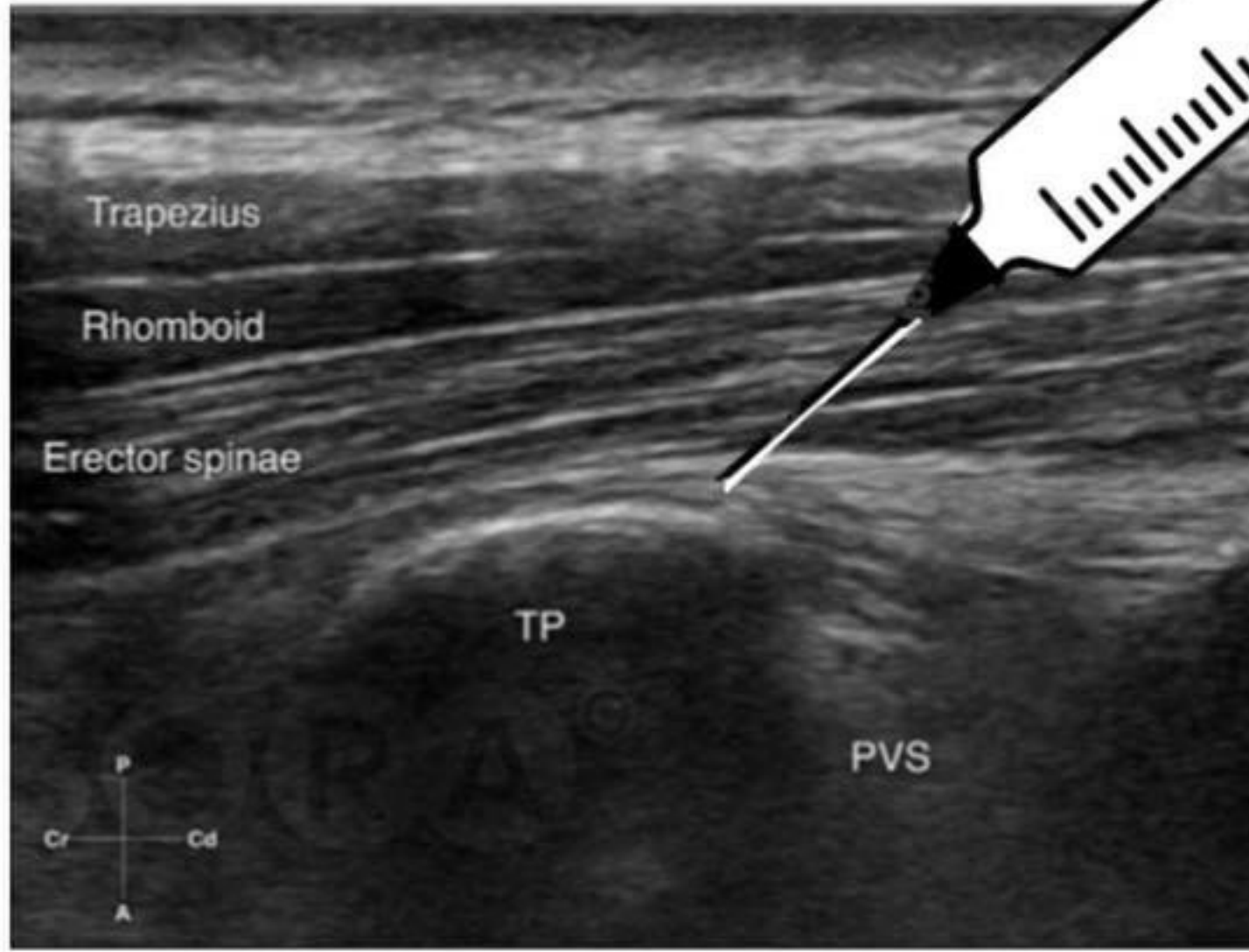
ROPIVACAINE DOSING

Max Dose: 3mg/kg
Volume to be used **per side**: 30ml
Use **MDCalc Local Anesthetic Dosing Calculator** for max dose of anesthetic
If needed, may dilute ropivacaine with normal saline to achieve desired 30ml volume





ERECTOR SPINAE PLANE BLOCK



PROCEDURE

Start at spinous process of interest

Identify spinous process (1)

Slide Laterally

Identify junction of transverse process and rib (2)

Advance needle and hit bone (3)

Aspirate for blood, place color doppler over area (capture image)

If negative, infuse anesthetic (capture image)

Infuse 30cc of anesthetic

